

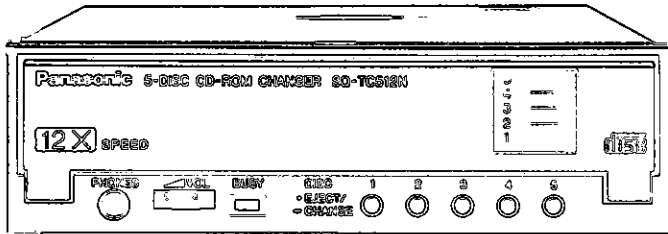
Panasonic®

**Make Life Easier With
a BIG 5 CD-ROM Changer Upgrade**

SQ-TC512N

5-DISC CD-ROM CHANGER

Internal Mount



12X

5-DISC CD-ROM Changer

12X Speed* — 1.8MB/sec for
Ultra-Fast CD-ROM Access
* CAV-CLV Average

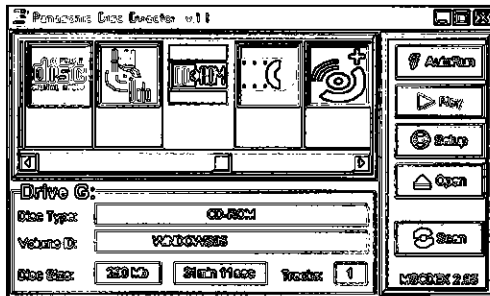
Easy Exchange
Disc Tray System

Plays CD-ROMs
and Audio CDs

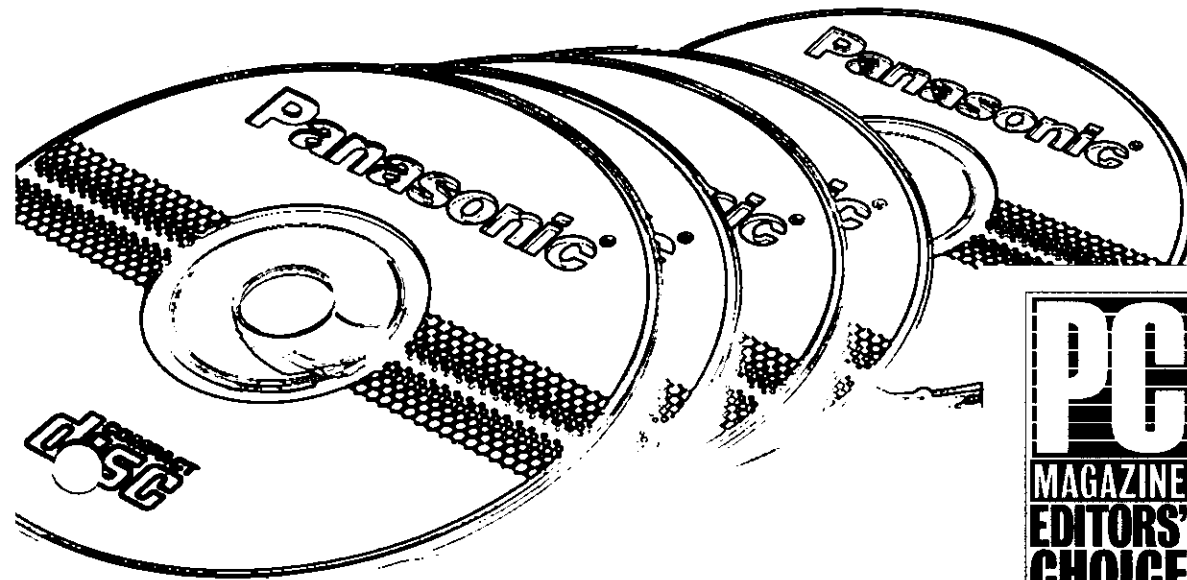
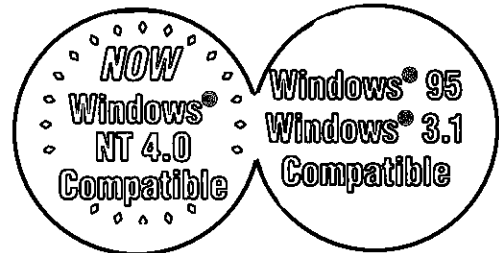
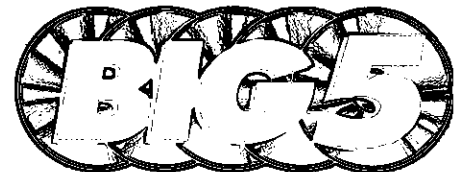
E-IDE Standard Interface
With ATAPI Support

Easy to Use
Software Included

Easy-to-Use Utility Software Included



- Simple Point and Click Under Windows® 95, and Windows® 3.1
- Single-letter or 5-letter Drive Operation — User Selectable
- Browse Feature
- Automatic CD Shuffling
- Networking Under Windows® 95

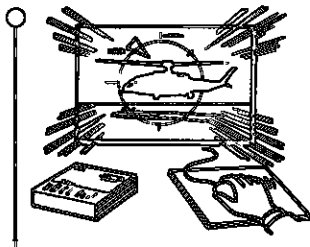


January 7, 1997
Big 5 10X CD-ROM Changer

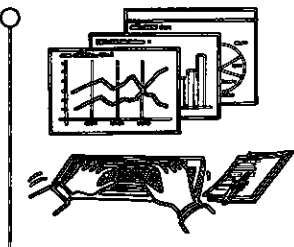
The Big 5 Kit Includes Everything Necessary to Upgrade to 12X Speed CD-ROM Changer Convenience



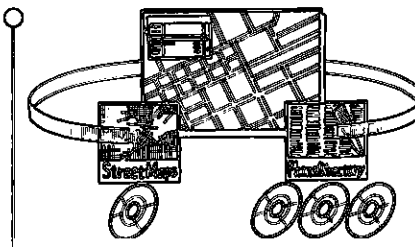
The Big 5 provides 5 times the capability of a single CD-ROM drive.



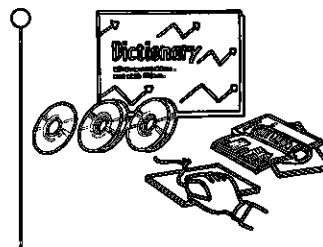
Play multiple game CD-ROMs without interruption.



Access frequently used CD-ROMs such as Databases, Encyclopedias and Business Applications.



Great for phone directories and street maps on CD-ROMs. Access data more quickly and efficiently.



Ideal for any multiple or single CD-ROM applications.



Durable CD-ROM Changer has 100,000 hour MTBF Reliability



1/2 height Changer mounts in standard size drive bay



Easy Exchange Disc Tray System — no clumsy disc caddies



Easy to install. Gets you up and running quickly



24-hour/7-day automated technical support
There is always someone there to answer your questions.



2-year limited warranty
Backed by Panasonic, a name you can trust.



Installs in 80386, 80486 and Pentium based AT compatible computer



Industry standard interface
Enhanced IDE interface with ATAPI support helps ensure that your drive works with your system.



Supports major operating systems
Windows® NT 4.0, Windows® 95, DOS 5.0 & higher, Windows® 3.1 & 3.11 supported.



Supports major CD-ROM formats:
CD DA (Audio), CD-ROM, CD-ROM XA, Photo CD Multisession*1, ISO 9660, Video for Windows*2, CD-I Movie*3 and Video CD*3.

Performance

Disc diameter	4.75", 3.16" (Optional adaptor required)
Disc speed	
Normal Velocity	200~530rpm (CLV mode)
Avg.12X Velocity	2540~4220rpm (CAV & CLV combination mode)
Data Capacity	656M Bytes (Mode 1) 748M Bytes (Mode 2)
Data transfer Rate	1200k~1900k Bytes/sec 1800k Byte/sec (average)*4
From buffer	16.7MB/sec (PIO mode 4 with IORDY)
Access Time	130 msec Typ.*5
Buffer memory capacity	128k Bytes
MTBF*6	100,000 (power on hours 10% duty cycle)

Error Rates

Soft read error	Less than 10 ⁻⁹
Hard read error	Less than 10 ⁻¹²

Audio Performance

Number of channels	2
Frequency response	20Hz~20kHz +0.5, -3dB (Line-out)
Signal-Noise Ratio	More than 85dB (Line-out)
Distortion	Less than 0.1% (1kHz, Line-out)
Output level	
Line out	0.8Vrms (50 kilohms)
Headphone	0.6Vrms (32 ohms)

General Performance

Power requirement	DC 5V=1.2A (Peak) DC 12V=1.5A (Peak)
Dimensions (W x H x D)	5 3/4" x 1 5/8" x 8 13/16"
Weight	2.9 lbs.

Environmental Conditions

Temperature	Operating	5~45°C	Non-operating	-20~60°C
	Humidity	20~90% Rh (Non-condensing)		20~90% Rh (Non-condensing)

Kit Contents

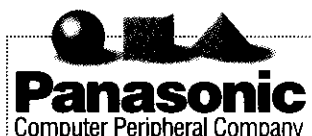
- 5-Disc CD-ROM changer — 1/2 height mount
- Simple step-by-step instruction manual & handy reference guide
- Eject pin/mounting screws (4 pcs)
- IDE interface cable & universal sound card audio cable
- E-Z installation software/Windows® NT4.0/Windows® 95/Windows® 3.1, 3.11/DOS

System Requirement

- 8MB of RAM
- 3MB of free space on Hard Disk

*1 Requires Photo CD viewer software (not included)
 *2 Requires Microsoft Video for Windows® or Apple Quick Time for Windows® (not included)
 *3 Requires MPEG decoder board or MPEG decoder software, and CD-I and/or Video-CD playback software (not included)
 *4 Average of 650M Bytes Transfer time
 *5 Access time: 1/3 stroke
 *6 MTBF: Read and Access duty is 10% of power on time. (At normal temperature and humidity.)
 Note: Windows is a registered trademark of Microsoft Corporation.

Panasonic Computer Peripheral Company
Multimedia Systems Division
Headquarters
 2 Panasonic Way, Secaucus, New Jersey 07094 (201) 348-7000



For your nearest dealer in the continental U.S., please call 1-800-742-8086
 Internet Address: <http://www.panasonic.com/alive>
 PCPC is a division of Panasonic Communications & Systems Company,
 a unit of Matsushita Electric Corporation of America